

# MONTHLY MEMBERSHIP PROGRESS REPORT

LOCATION INDIA

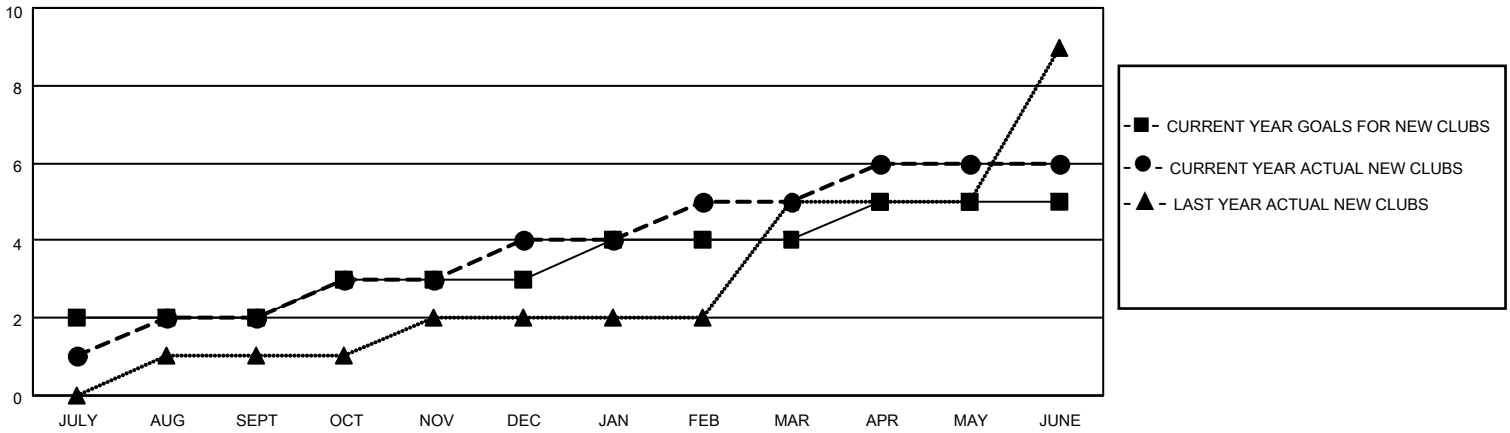
District 3234H1

Results as of: 6/30/2023

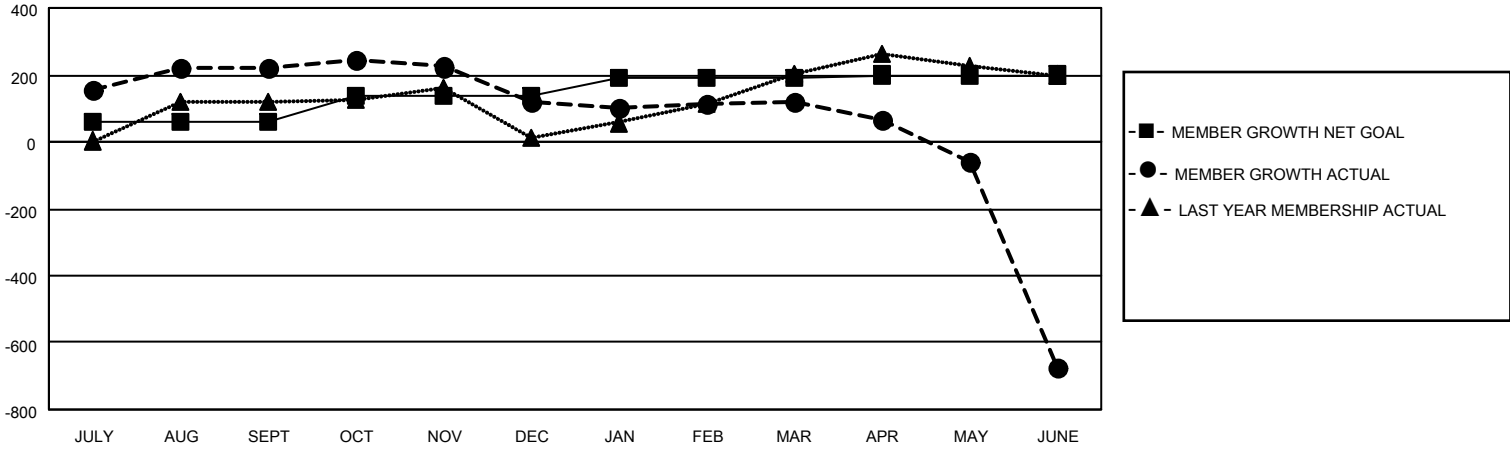
Clubs			
RESULTS FOR 2022-2023			
QUARTER	NEW CLUB GOAL	NEW CLUBS	DROPPED CLUBS
JULY/AUG/SEPT	2	2	0
OCT/NOV/DEC	1	2	3
JAN/FEB/MAR	1	1	1
APR/MAY/JUNE	1	1	9

Members			
RESULTS FOR 2022-2023			
QUARTER	MEMBER GROWTH NET GOAL	MEMBER GROWTH ACTUAL	DROPPED MEMBERS ACTUAL (including transfers)
JULY/AUG/SEPT	60	307	68
OCT/NOV/DEC	80	65	171
JAN/FEB/MAR	50	87	85
APR/MAY/JUNE	10	86	866

**GOALS AND ACTUAL NEW CLUBS CUMULATIVE**



**GOALS AND ACTUAL MEMBERS CUMULATIVE**



**DROPPED CLUBS: 13**

**76 CLUBS OF 113 ADDED 1 OR MORE NEW MEMBERS**

**GENDER DISTRIBUTION**

MALE	2,098 (61.35%)
FEMALE	1,322 (38.65%)
NON BINARY	0 (0.00%)
PREFER NOT TO ANSWER	0 (0.00%)

**DROPPED MEMBERS**

[CLICK HERE FOR CUMULATIVE MEMBERSHIP DATA](#)

DECEASED	16
CLUB CANCELLED	194
OTHER	980
<b>TOTAL</b>	<b>1,190</b>

TOTAL FAMILY UNIT MEMBERS 2,368

FAMILY MEMBERS PAYING HALF DUES 1,272